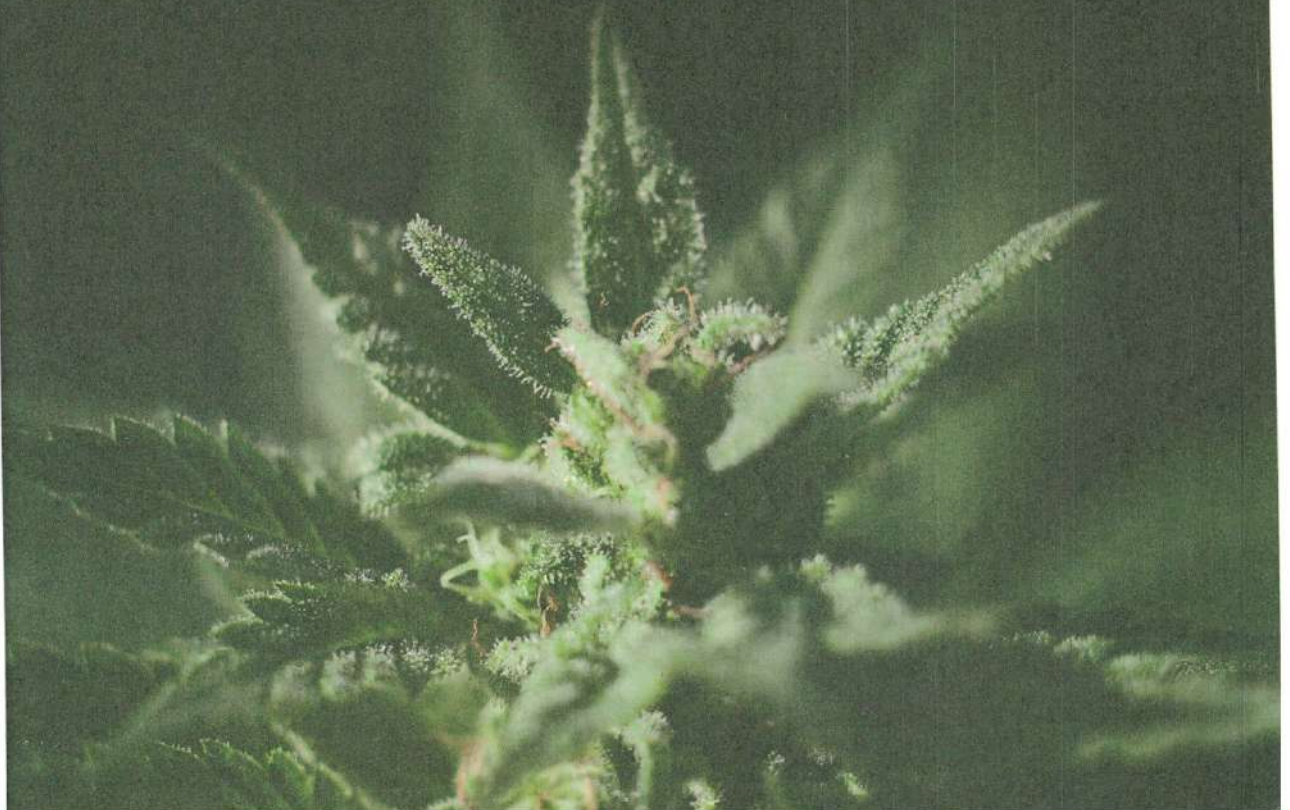


# The HEMP TREASURY

Hemp Cultivation  
& Hemp Industries  
Partnering/Mentor Portal







# EXTREME SUSTAINABILITY

From planting to finished  
product in 100 days

Renowned to be the strongest plant fibre known to mankind, hemp can be grown across most regions of Australia all year round. Producing approximately six tonne of useable material per acre. From planting the seed, hemp can be harvested, processed, and used to manufacture a wide range of products, in as little as 100 days.

Once the crop is established, hemp requires minimal water and near zero herbicides and pesticides nor does it require stubble burning. The crop collects heavy metals from within the soil and delivers humus back to it. Hemp is highly sustainable and is estimated to have 22 tonnes of carbon sequestered per hectare. In comparison, it would take 57 years for a hardwood forest to achieve the same outcome. Hemp can be used to replace timber, plastics, and steel in many commercial applications, making it more environmentally viable.

## HEMP PRODUCTS



Hemp core



Hemp pallet



# THE COMPANY

Hexcore Pty Ltd is an innovative Australian manufacturing company within the growing hemp industry.

Hexcore was founded by Brett Boag and Dudley Maudlin in late 2019. With Brett having more than 15 years experience in the global hemp industry, incorporating 10 years with manufacturing hemp-based products overseas.

During lockdown, Hexcore conducted research and development, designing, and producing sample products in readiness for the opening of their new factory in Pakenham, Victoria.

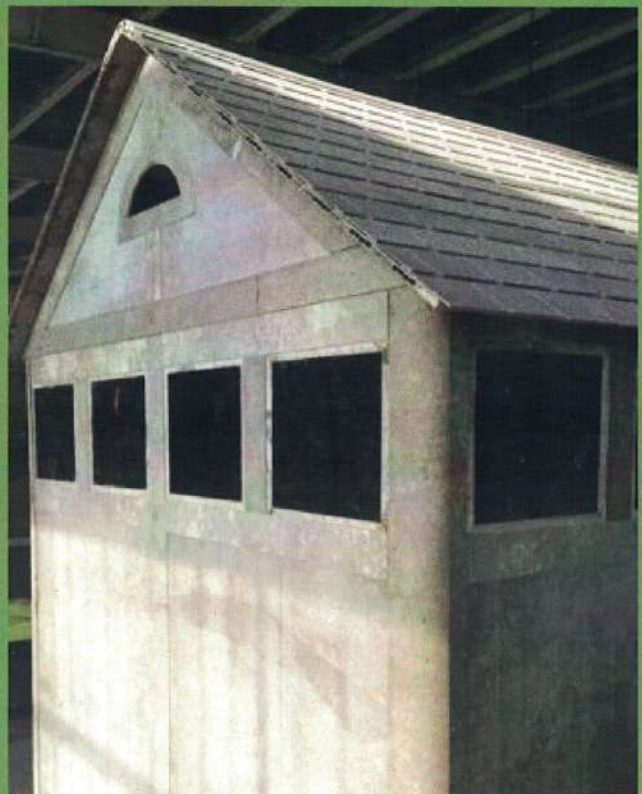
Hexcore aims to deliver a wide variety of hemp-based products to the construction, housing, transport, and packaging industries.



Hemp I beam



Hemp textured wall panel

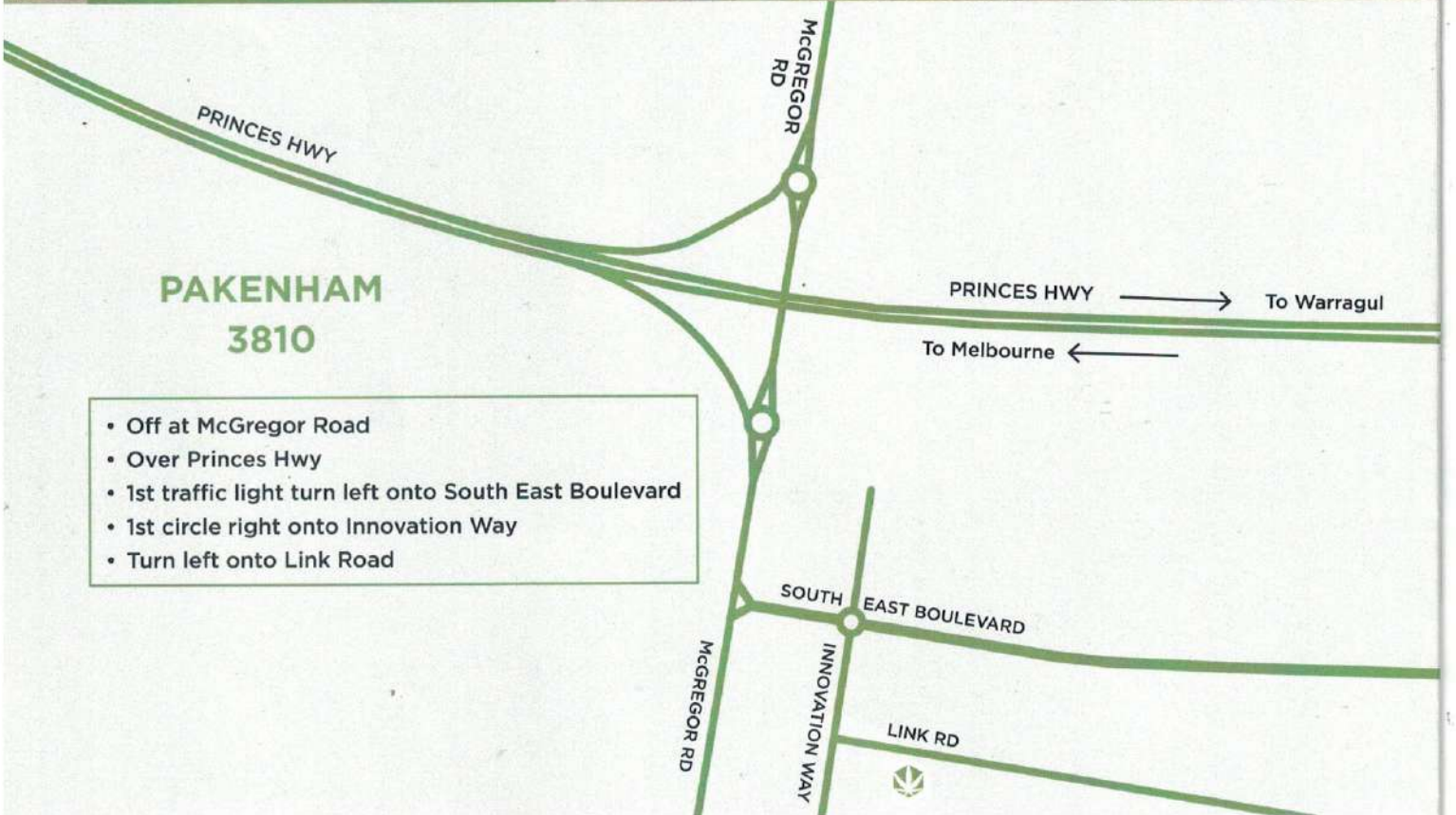


Hemp shed





Hexcore Pty Ltd  
 27 Link Road  
 Pakenham  
 Victoria 3810



**BRETT BOAG**  
 0406 289 090  
 brett@hexcore.com.au

**DUDLEY MAUDLIN**  
 0405 967 076  
 dudley@hexcore.com.au

[www.hexcore.com.au](http://www.hexcore.com.au)







100 days



**HEXCORE**  
PTY LTD

# The Hemp Treasury Hemp Cultivation and Hemp Industries Partnering-Mentoring Portal

**There are 3 sections to this facility;**

- P2** Starting with **The Innovation Profile** outlining the in detail aspects of what is included and Why;
- P8** Secondly, is **The IP Development**, covering the significance in Financial, Societal, Environmental terms, of The Hemp Treasury
- P13** Thirdly, is **The Services Catalogue and User Manual** enabling those inclined to inform themselves and connect up with Partner-Mentors, who can enable the new member to, engage with any aspect of Hemp from Hemp Health, Hemp Food, Hemp Industrial, - All you require to get started with cultivation, processing, manufacturing, marketing, distribution, networking.

The Law of One,  
is The Universal Charter  
that The Hemp Treasury  
operates under; Essentially,  
'Where we Go One, We Go All!'

# Innovation Profile Summary

**Hemp Treasury, Full Spectrum Hemp Cultivation**  
**- Add Minimum 200k to your bottom line plus create**  
**massive Local Community Health,**  
**Economic and Social Benefits**

## **Name of Innovation**

Hemp Treasury Full Spectrum Hemp Cultivation.

## **Description**

**Methodology and Mentoring for First Time-Successful Propagation, Cultivation, Harvesting, Manufacture, Marketing, Distribution of Full Spectrum Hemp, plus Industrial, including Hemp Building Systems, Hemp-Timber, Food**

<b>Organisation Detail</b>	The Hemp Treasury Partnership
<b>Location</b>	Australia and Global.
<b>Type of organisation:</b>	Private Membership Association
<b>Know-How</b>	Technologies & expertise employed
<b>Benefits</b>	Unique selling points
<b>Market Sectors</b>	Current or potential target markets
<b>Current Markets</b>	Rural, and Urban, Large and Small
<b>Development Stage</b>	This innovation is currently classified as: Proven-successful. Within this category, its stage is: Established - The innovation is generating a substantial Reserve that is being converted to cash flow.
<b>Registered Rights</b>	Patents, Trademarks and Designs The Hemp Treasury Partnership has the following available for prospective partners
<b>Intellectual Assets</b>	Inventory of Intangibles.



## **Resources**

### **Trade secret**

Information that delivers economic benefit to The Hemp Treasury Partnership and is not generally known, sourced from many successful hemp enterprises in several parts of the world.

### **Third party data**

Data used by The Hemp Treasury that has been contributed by eminent Partners within The Hemp Treasury, including, Genetics, Health, Food, Hemp Building, Hemp Timber IP, Products, Processes and much more.

### **Know-how**

#### **(specialist & technical)**

Specialist technical knowledge (i.e. not generally available) which contributes to Hemp Treasury's delivery of products, services, processes, business models, solutions based on proven practical methods of Cultivation, Processing, Manufacture, Marketing, Distribution of Full Spectrum Hemp plus Industrial and Food-Hemp, via a Mentoring system.,

This way of assisting farmers, is unique in the global hemp industry.

### **Proprietary end product**

Several proprietary products relating to Full Spectrum Hemp Health, Food, Animal foods, Hemp Building, Hemp Timber, Hemp Batteries, Hemp Horseshoes and more.

### **Proprietary process/technology**

Proven, Proprietary Methodologies in respect of Cultivation, Harvesting, Processing, Manufacturing, Marketing, Distribution and more are provided via The Hemp Treasury Partnership.



**Unique user experience**

The Hemp Treasury Partnership Mentoring System is a unique, distinctive and scalable way of interacting with customers (in person or online) that has been developed by your organisation and is fully documented, videoed and supported by an ongoing Mentor-Support group, - all specialists in their respective fields.

**Trade dress/get-up**

A collection of styling, colouring, packaging and other design attributes (not otherwise registered) which create a distinctive 'look and feel' to Hemp Treasury's products or services is under development.

**Unregistered designs**

Distinctive styles, shapes and configurations unique to The Hemp Treasury Partnership which are not covered by a design registration (national or international)

**Corporate culture**

The Law of One<sup>1</sup> is our Charter-Values Statement; It brings a very distinctive mission and vision, backed by internal working practices, that make a positive collective contribution to staff recruitment, retention, productivity and morale; Indeed, The Law of One's influence expands everywhere.

<sup>1</sup> The Law of One; If One is helped, all are healed, If One is hurt, all are harmed'; aka All we do, must work for Everyone!



## **Relationships**

The assets being claimed are:

- Marketplace** The Hemp Treasury business model is based on a global network of users, collaborators and suppliers that delivers synergies by sharing and augmenting each other's contributions.
- Social media followers** The Hemp Treasury's access to a large audience that is enabled and facilitated by its social media presence, assisting The Hemp Treasury to communicate with and influence the global hemp market.
- Market leadership** The Hemp Treasury has influence in the global market(s) by its Partnering-Inclusive Ideology's power in attracting talent and resources very rapidly across all sectors of the hemp market.
- Corporate social responsibility** The Hemp Treasury is publicly committed to pursuing policies that are socially and environmentally conscious, as can be seen from this document, - Vast Societal, Cultural, Health, Financial, Environmental benefits flow from all our activities, policies and activities!
- Customer intelligence** Ethical-consensual use of Records of customers, their historical buying patterns, their requirements and specifications is a part of The Hemp Treasury's Modus Operandi, - our customers positively seek this as a valued networking facility!
- Customer/market knowledge** Further to the above, -Unique, preferential or specialist insights into customer needs and decision-making processes are utilised if customers mutually desire same, to facilitate the industry's expansion.



<b>Supplier knowledge</b>	Similarly, Unique, or specialist knowledge of materials, products or services needed to enhance customer value.
<b>Intellectual property advice</b>	The Hemp Treasury has Relationships with one or more external IP practices, and qualified in-house IP expertise, routinely used. Within the category of: <b>Recommendations</b>
<b>Regulatory approval</b>	The Hemp Treasury has Permission to operate in or supply a market that is subject to regulatory entry requirements, representing a barrier to competition (e.g. DPI approval)
<b>Permissions/ rights to operate</b>	The Hemp Treasury operates as a Private Membership Association.
<b>Customer reviews</b>	The Hemp Treasury benefits from a substantial body of independent testimonials provided by users of our goods and services



# The Hemp Treasury IP Development

**The Hemp Treasury IP is the collective of IP from proven, successful leaders in The Hemp Cannabis Industry globally, who are passionate about assisting Hemp-Cannabis' myriad industries and positive influences expansion.**

The main initial pillars of The Hemp Treasury include Hemp Health(\$1t)<sup>2</sup>, Hemp-Food (\$800b)<sup>3</sup>, Hemp-Industrial, including Hemp Building (\$700b)<sup>4</sup>, Hemp Timber (\$70b)<sup>5</sup>.

The reason The Hemp Treasury Partnership IP is so valuable and important, is that it is the portal via which all the largest industries are enabled in all respects, Financially, Know How, Ideologically, hence assuring the global implementation of a very powerful force for positive.

<sup>2</sup> Based on 10% of the global \$11t market. <https://www.businesswire.com › news › home › 20190625005862 › en › The-11.9-Trillion-Global-He>

<sup>3</sup> Valued at ~ \$800b based on 10% of the \$8t global food market; Hemp Protein is the highest and most complete source of all amino acids required for health and avoidance of Amino Acid deficiency syndromes (physical, mental and emotional). It is affordable and far healthier than red meat consumption, and is complimentary to reduced-moderate meat consumption <https://www.plunkettresearch.com/statistics/Industry-Statistics-Global-Food-Industry-Statistics-and-Market-Size-Overview/>

<sup>4</sup> Valued at ~\$700b, based on 10% of the 7t global building industry; this figure is in turn very reasonable due to the ~ 40% lower cost due to patented dry-lock brick assembly, superior fire resistance, acoustic and thermal qualities; Hemp has zero temp differential, hence virtually zero heating-cooling costs, totally unequalled <https://www.statista.com › statistics › 788128 › construction-spending-worldwide>.

<sup>5</sup>Valued at \$70b, based on 10% of the \$700b global timber market, which is in a diminishing supply situation, again making hemp timber a very viable product; Add to that, the huge positive influence these 2 industries alone make to farming and in turn national economic status globally, nationally, regionally.



Financially, The Hemp Treasury is valued higher than Bitcoin<sup>6</sup>; However, when the societal impacts are further considered, The Hemp Treasury's contributions are far greater; Starting with facilitating millions of farmers globally to be successful in their first hemp crop from propagation to cultivation, processing, harvest, storage, marketing, distribution; In so doing farmers, their communities, and their countries are benefitted, Health-wise, Financially, Ideologically via the ethos of Partnering; The Soil benefits from hemp's presence<sup>7</sup>; The Societies become more attuned to sustainable ways, including organic farming; Self Sufficiency and Cooperation-Partnering are nurtured, building resilience and Self Respect. These are the greatest benefits bestowed by The Hemp Treasury Partnership.

Pay It Forward is a very powerful part of The Hemp Treasury's methodology, enabling Limitless Expansion of The Hemp Treasury's global activities<sup>8</sup>. The Hemp Bank's Partnering Charter consciously and subliminally, promotes and gives rise to an ever expanding circle of cooperation; This is for many reasons, including the Humanity and feel-good, but also for the reason that it is by far the best, most efficient form of expanding individual and collective success; Hemp alone is very powerful in this respect, and it leads on, naturally to other positive, sustainable economic, societal, environmental and other activities.

<sup>6</sup>Based on Nett Profit x 2 x 10% of 570 million family owned farms globally.

<sup>7</sup> Hemp aerates and adds carbon hence the soil biology, hence production is increased, as is documented.

<sup>8</sup> The Pay It Forward phenomenon is characterised by a minimum of x 7 positive acts as a result of each initiating positive-kind action.

**Starting Physical and other Assets<sup>9</sup> of The Hemp Treasury:**

Include 50 million seeds, a growing range of genetic seed varieties, many heirloom from many areas, relationships with seed suppliers, Health Treatment<sup>10</sup> Methodologies and skilled operatives, hemp farmers, manufacturers, marketers, international networks, Human and Animal products formulations, Hemp Food IP, Hemp Building and Hemp Timber IP, Hemp Battery IP, and more, expanding daily.

The collective of all these,  
coupled with the ability to, create an Infinitely  
expanding network of Mentor-Partners,  
makes The Hemp Treasury,  
literally Unlimited!

*<sup>9</sup>All are available on request from any of the listed Partner-Mentors.as is documented.*

*<sup>10</sup>Full Spectrum Hemp is the use of the entire Hemp-Cannabis phytonutrient spectrum, rather than narrower applications where 'isolates' such as cbd, cbg, thc and others are designed and engineered; The benefits of this approach are that in virtually all cases, a wider spectrum is more effective than a lesser one.please see 'Cannabinoid Testimonials document @ The WE Project [www.theweproject.is](http://www.theweproject.is).*



**General Enquiries; Mark Greathead<sup>11</sup>** Dr  
markatintentionone@gmail.com Mob; +61 417 247 800

**Technical Enquiries; Mark Smith<sup>12</sup>**  
mark7ruth@gmail.com +61 451 631 766

**Farmer Enquiries; Mike and Helli McCosker<sup>13</sup>**  
mmccosker@bigpond.com +61 428 635 323  
hmccosker@gmail.com +61 428 635 321

**Admin + Networking; Charles Kovess<sup>14</sup>**  
Charles@kovess.com +61 412 317 404

<sup>11</sup>Mark is a veterinarian originally, Co Founder with Fiona Reynolds of Intention One Earth Foundation [www.intentiononeearth.com](http://www.intentiononeearth.com)  
Horsepower Equine Nutrition Systems P/L [www.horsepower.com.au](http://www.horsepower.com.au)  
The WE Project [www.theweproject.is](http://www.theweproject.is) Mark is the co-founder, with the Team attached, of The Hemp Treasury and The We Project, We Coin.

<sup>12</sup>Adviser to several Heads of State re Cannabis Hemp Industries!

<sup>13</sup>Hellie and Mike are CoFounders of Carbon8 Soil Regeneration group as well as being farmers themselves, committed to Sustainable Farmings expansion;  
<https://carbon8.org.au>

<sup>14</sup>Charles is secretary of The Australian Industrial Hemp Alliance [hempalliance.org.au](http://hempalliance.org.au)  
as well as being a Public Speaker, member of ~ 12 Boards of Directors  
including The Hungarian Chamber of Commerce, The Australian Comedy Association.

**Partnering-Mentoring;**

**Richard Gasser**<sup>15</sup> richardgasser@msn.com +61 415 383 759,

**Ben Gosse**<sup>16</sup> benmgosse@gmail.com 0404 196 215

**David Chick**<sup>17</sup> ihempwa@gmail.com +61 427 579 102

**John Clarke**<sup>18</sup>+61 468 461 400 2johnclarke@gmail.com

**Industrial Hemp-Innovations Implementations;**

**Carl Martel**<sup>19</sup> cymartel@gmail.com

**Hemp Building, Hemp Timber, Hemp Batteries,  
Hemp Horseshoes, many hemp innovations;**

**Brett Boag** kbboag@outlook.com 0416 913 200 and

**Dudley Maudlin**, business mager-development  
dudley@hexcore.com.au 0438 088 225 of Hexcore.

**Hemp Formulations for Humans and Animals;**

**Erin Lindley**<sup>20</sup> kismetcarmen@gmail.com

*<sup>15</sup>Very experienced mentor to many successful-first time Full Spectrum Hemp crops establishment.*

*<sup>16</sup>Ditto as for #10 above, as well as having Building Construction skills and Know How re: the Green House, Irrigation, Cultivation and other aspects of Hemp enterprise establishment.*

*<sup>17</sup>Ditto as for #10 above, Plus, David has a very Spitiual connection to Hemp cultivation, as well as being very practically competent.*

*<sup>18</sup>John is a former Suffolk farmer and Master Landscaper, retrained in hemp cultivation; he is a very astute Infrastructure-Development Strategist.*

*<sup>19</sup>Carl is an Internationally experienced Hemp Industry Operative, experienced in all aspects of Hemp Industry set up, and operations; He is also an innovator of many Industrial Hemp technologies.*

*<sup>20</sup>Erin is an experienced formulator of Hemp products for Health, Nutrition, or Humans and animals.*



# Hemp Treasury Partners Services Catalogue & User Manual

## **Introduction, Overview, Purpose**

This document is an outline of the services provided by The Hemp Treasury Partnership. You will find some detail here, and with the input of the Mentoring Team, you will be able to navigate your path to getting started in hemp-cannabis cultivation, regardless of whether you are in 'the city or the bush', whether you are interested in Hemp Health, Hemp Food, or Hemp Industrial, including Hemp Building, Hemp Timber, Hemp Batteries and more!

This information will be made into a series of videos, meantime, we provide this User Manual for those early adopters, who have the vision, courage and ability to get started, thus 'make the path' which others will tread.

We thank you in advance, and you will know who you are and the magnificence of this opportunity and the vast contribution it is making and will further expand to become.

The ability of anyone, to create an enterprise that confers vast financial, health, community benefits is what this document and organisation is all about, - most of all, it is about cooperation, INclusivity, creating of Peace, Prosperity and Joy!

## Catalogue of What is Offered

### 1.Hemp Crop types;

There are 3 basic hemp crops, hemp flower or bud which is a smaller crop grown for its high cannabinoid and terpene oils content. Hemp Seed for Hemp Food and Hemp Fibre, grown for Industrial applications. The first is usually a Greenhouse crop, the latter 2 are usually BroadAcre.

### Hemp-Health

Suited to greenhouse cultivation or outdoors, Hemp for health is an ideal way to get started for the reasons that financial, health and societal benefits accrue from a very conservative start-up cost of literally next to nothing, in the case of an outdoor crop, where literally, a handful of seeds can result in a valuable crop.

Typically a greenhouse is used to minimise weather and pest issues.

### Hemp-Food

Hemp Protein has the most perfect Amino Acid profile for human and animal nutrition. As global trends to lower red meat consumption expand, high quality protein-Amino Acid sources become hugely important, - for the reason that a very high proportion of illness is actually due to Amino Acid deficiency syndromes, including Mental-Emotional problems such as BiPolar, Depression, Obsessive Compulsive Disorder, also Physical problems such as ligamentous problems, menopausal, elevated cholesterol and many more; For this reason, hemp protein has a vast importance and value in the new rural economy.

**3 ton/ HA has been achieved.**

**It sells for ~ \$10/kg retail, as an organic product, hence a massive opportunity for early farmer adopters!**



### **Hemp-Industrial, Hemp fibre**

Is used for many applications from Hemp Building systems to Hemp Timber to Hemp Batteries.

### **The collective of these industries' \$ value**

Is in the Trillions of dollars, hence the contribution to local economies is vast. Add to this the Societal, Environmental, Independence, Self Respect and other contributions and the contribution Hemp offers and delivers, is inestimable!

### **Education**

#### **Hemp-Back Story**

Starting with the truth, hemp was until the 1930's mandated to be \*